



The Clubhouse
Havant Park
via Wickes Car park,
via Potash Tunnel, off Park Way, Havant
Hampshire
PO9 1HH

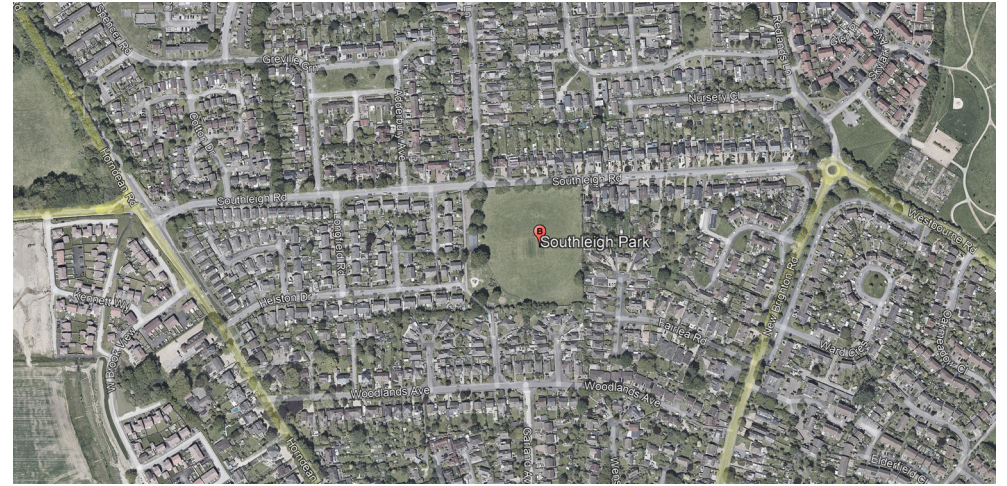
DIRECTIONS

From the A27 or M27. Leave at junction with A3023 Havant/ Hayling Island, take slip road onto roundabout and head north into Park Road North, past first set of traffic lights and then Pelican crossing. At next set of traffic lights, turn left into Park Way and bear right into the Central Retail Park car park. On the right at the rear of the car park next to Wickes Store is a pedestrian tunnel which takes you under a road/rail bridge and into Havant Park.

PARKING

As of 15th MARCH 2022, we are unfortunately unable to provide parking at Havant Park. However, this may change moving into April - please contact the Havant CC captain in advance to check.

Parking at the club is unfortunately limited. We have a number of parking permits available to accommodate players, scorers and umpires - we are unable to provide permits for supporters. Please try to organise teams travelling in a minimum number of vehicles.



Hollybank Recreation Park
Southleigh Road
Emsworth
Hampshire
PO10 7TX

DIRECTIONS

From the A27. Leave the A27 at the Emsworth/Havant slip road, and follow the signs for Emsworth on the A259. Continue on the A259 into Emsworth, until you reach a roundabout. At the roundabout, take the 1st exit and head up North Street. Follow the road until you pass under a railway bridge and a road bridge. Continue on for 1 mile and turn right down Southleigh Road. Continue for 0.2 of a mile and the ground and carpark is on the right.

PARKING

From the A3(M). Leave the A3(M) at junction 2, and follow the signs for Rowlands Castle and Emsworth on the B2149. Follow the B2149 for 1.8 miles. At the Shell Service Station, take the left hand fork, signposted Emsworth. Continue on this road for 1.9 miles, and turn left down Southleigh Road. Continue for 0.2 of a mile and the ground and carpark is on the right.